



ISLAND

INDOOR & OUTDOOR

INDOOR & OUTDOOR



PIEL S.A. - Avda. Del Cordell de Múrcia, 6 - 46890 AGULLENT - SPAIN
+34 962 907 400
www.piel.es





Tejiendo por un mundo mejor

Piel SA, es una empresa comprometida con las personas, la calidad, el servicio y el planeta.

Weaving for a better world

Piel SA, is a company committed to people, quality, service and the planet.



Piel SA, fundada en 1976, es una empresa textil con una área de producción de más de 70.000m2, certificada por SGS para la Norma de Calidad y Satisfacción del Cliente ISO 9001: 2015.

Piel SA, founded in 1976, is a textile company with 70.000m2 production area, certified by SGS for the Quality and Customer Satisfaction Standard ISO 9001:2015.

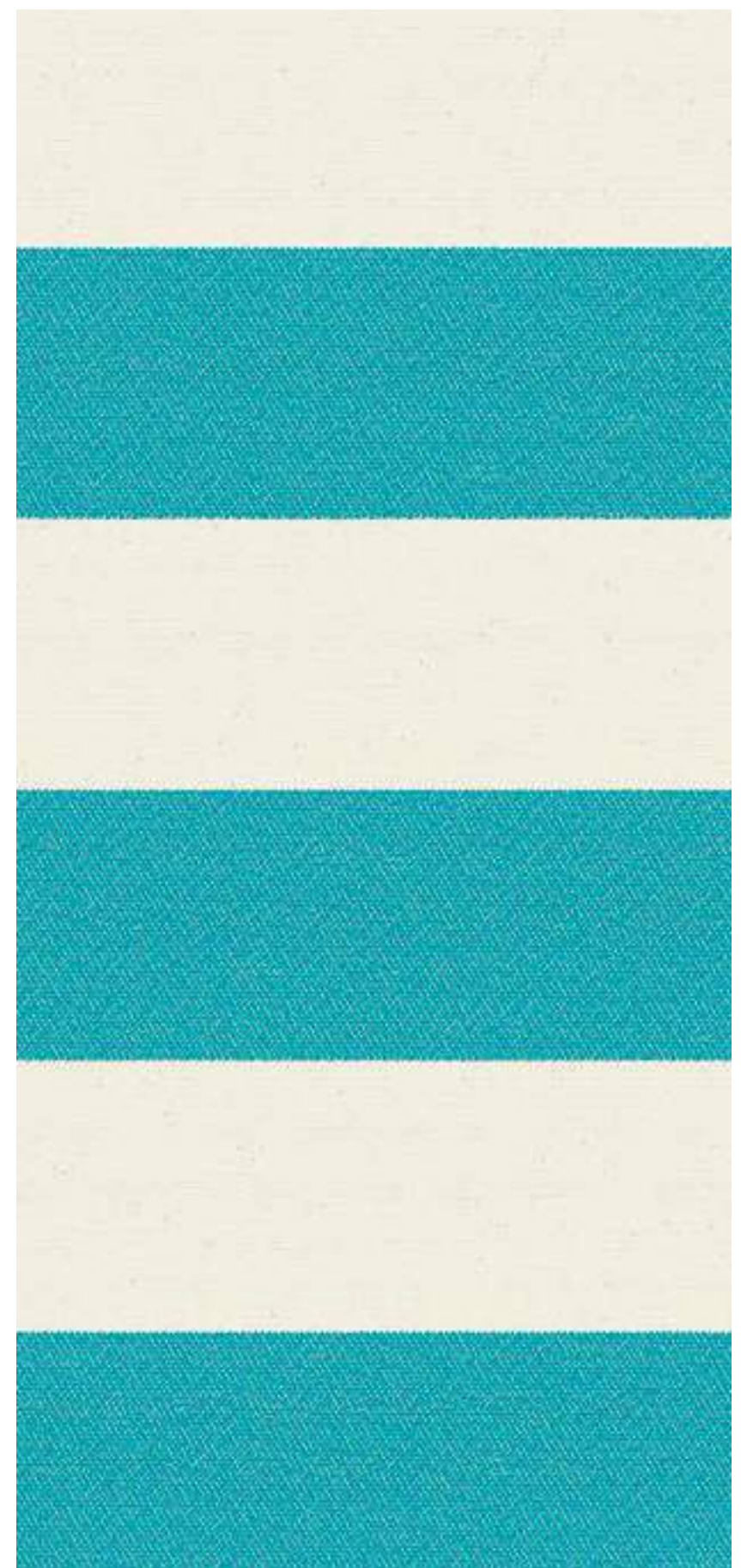
Escanea este código QR para saber más sobre nosotros.

Scan this QR code to know more about us





TEJO C/26
HINOJO C/64
TEJO C/64



GOLETA C/64



TILAPIA C/64



BEDOTIA C/64



JUREL C/64



ESCAMAS C/64



LUCIO C / 62



BEDOTIA C / 62



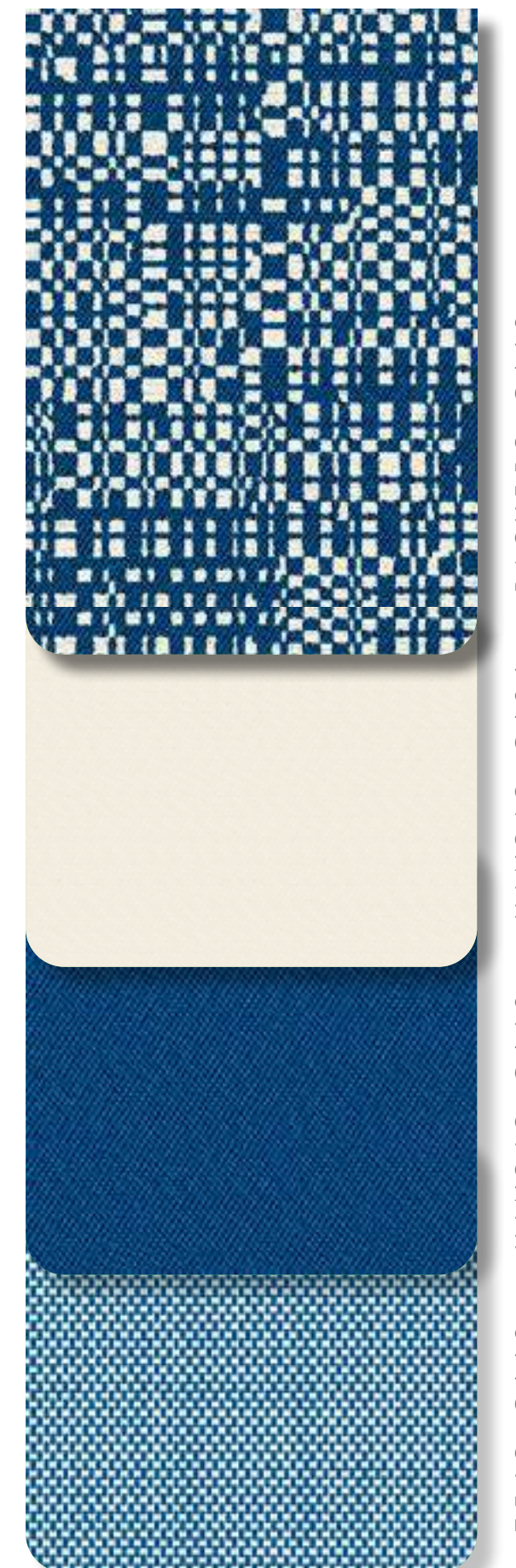
JUREL C / 62



DRITTO C / 62



GOLETA C / 62



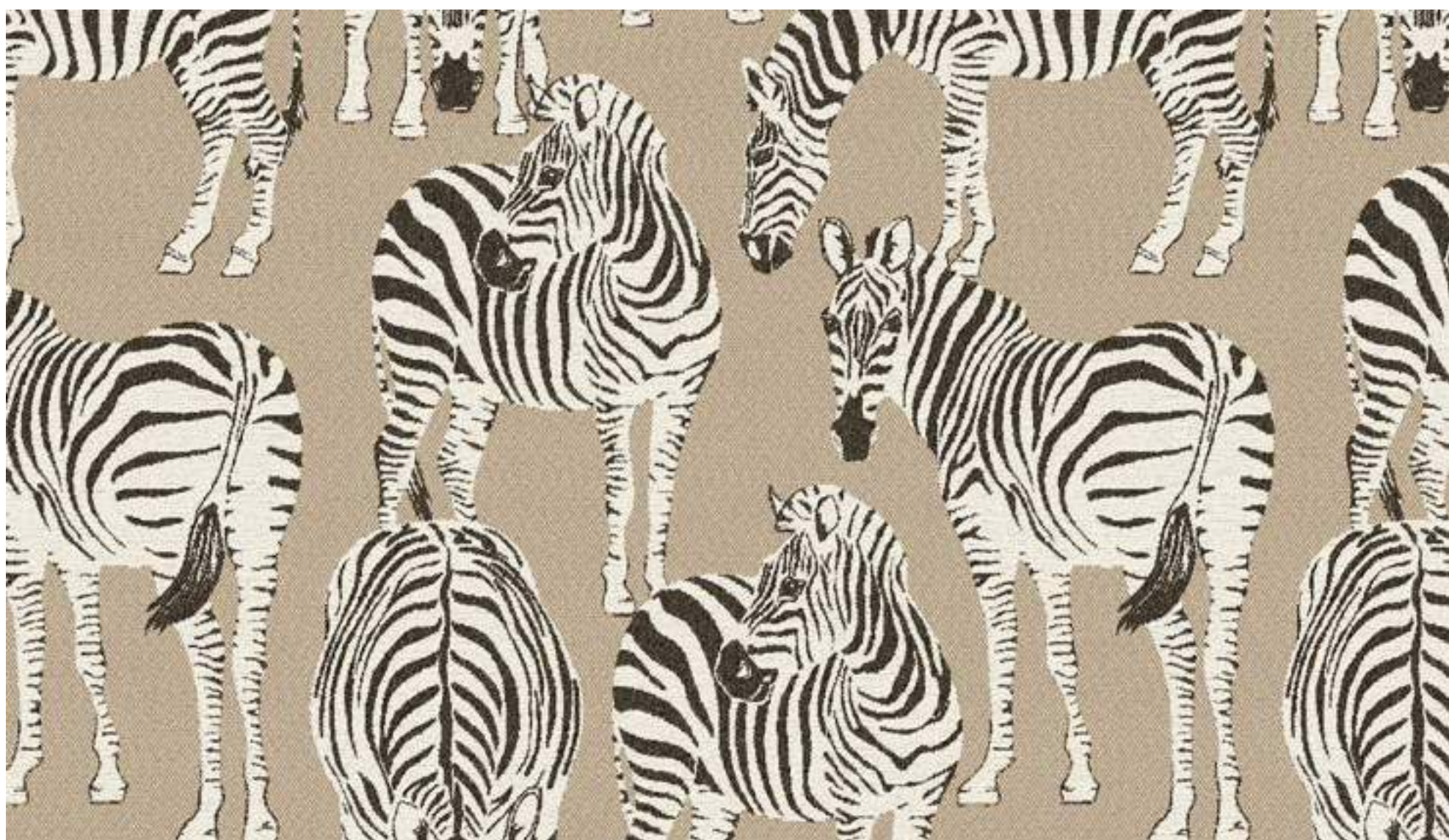
TEJO C / 62 HINOJO C / 62 HINOJO C / 26 RAQUERO C / 62



GOLETA C / 25



TEJO C / 24 HINOJO C / 25 HINOJO C / 22 RAQUERO C / 25



CEBRADA C / 25



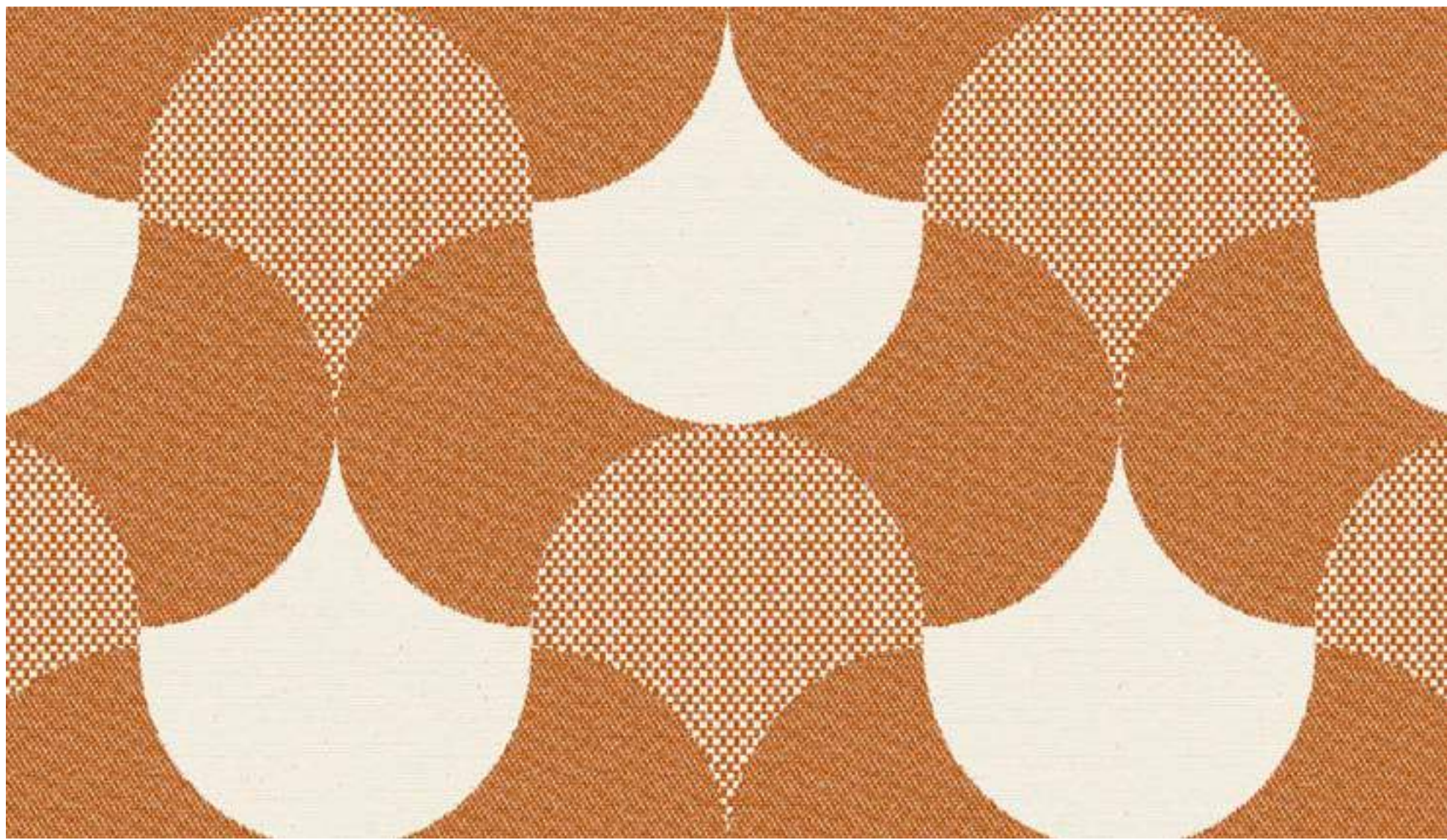
KETA C / 25



BEDOTIA C / 25



JUREL C / 25



KOI C / 48



ESQUIFE C / 48



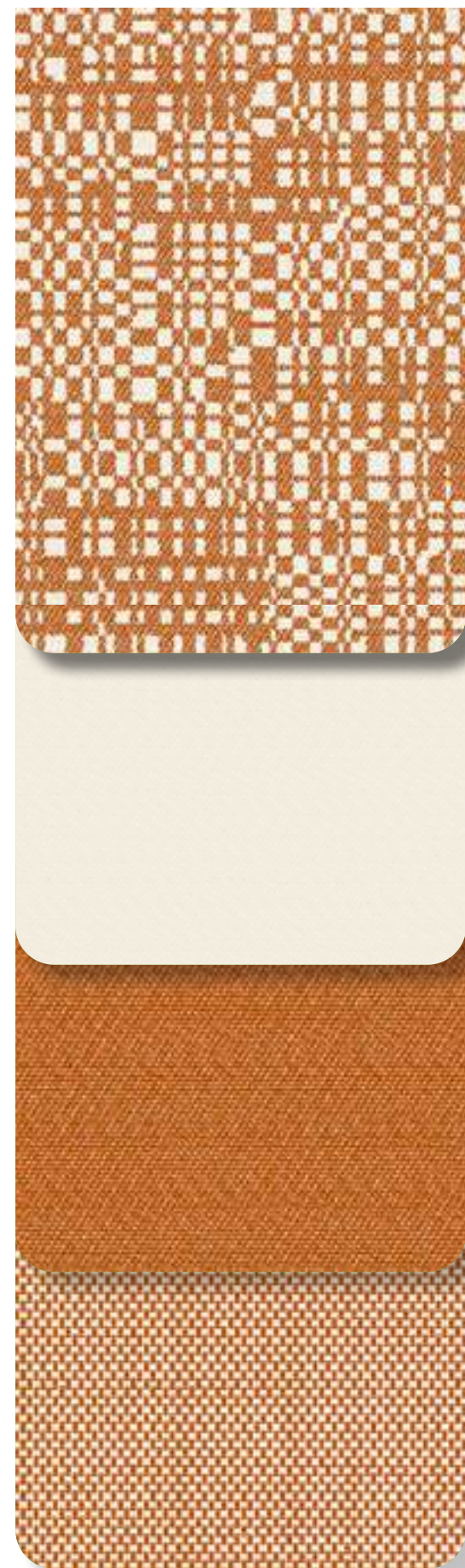
BEDOTIA C / 48



JUREL C / 48



GOLETA C / 48



TEJO C / 26 RAQUERO C / 48





BEDOTIA C / 54



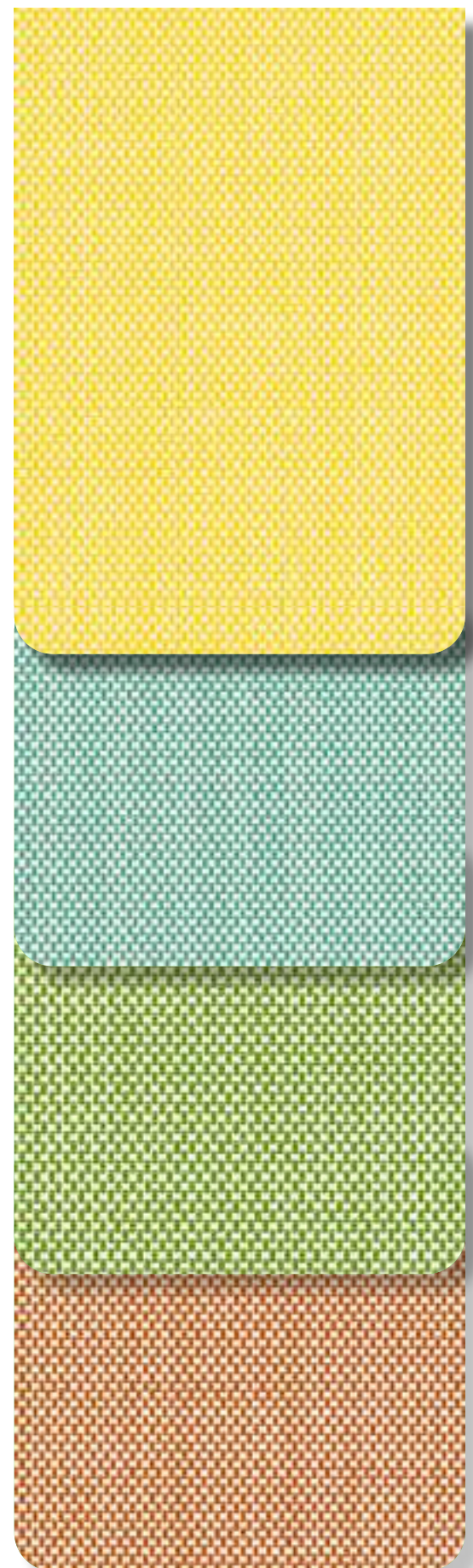
BEDOTIA C / 48



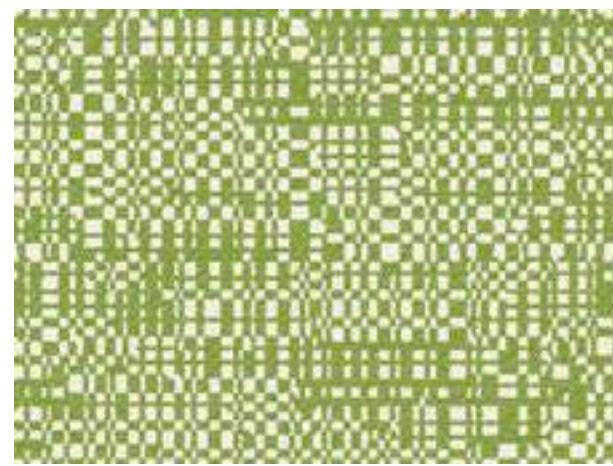
BEDOTIA C / 56



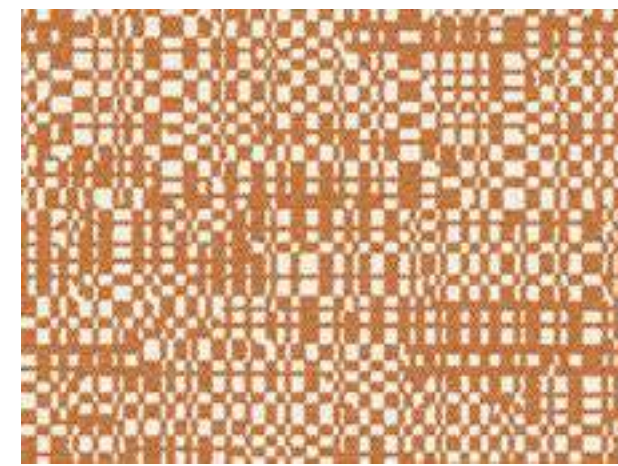
BEDOTIA C / 84



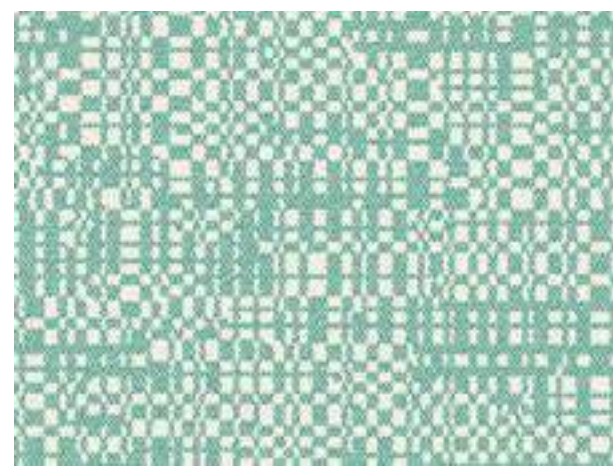
TEJO C / 84
TEJO C / 56
TEJO C / 54
TEJO C / 48



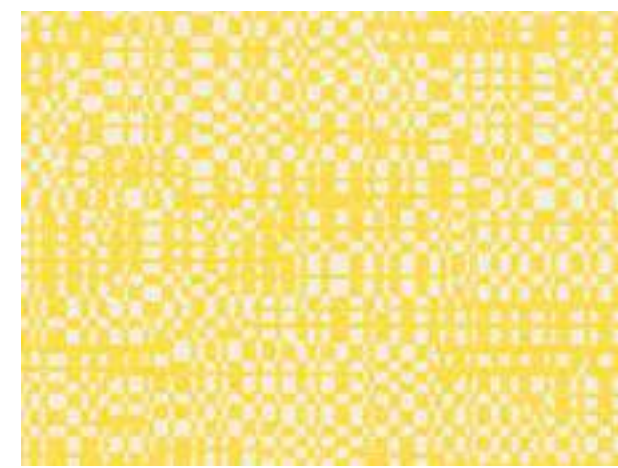
RAQUERO C / 54



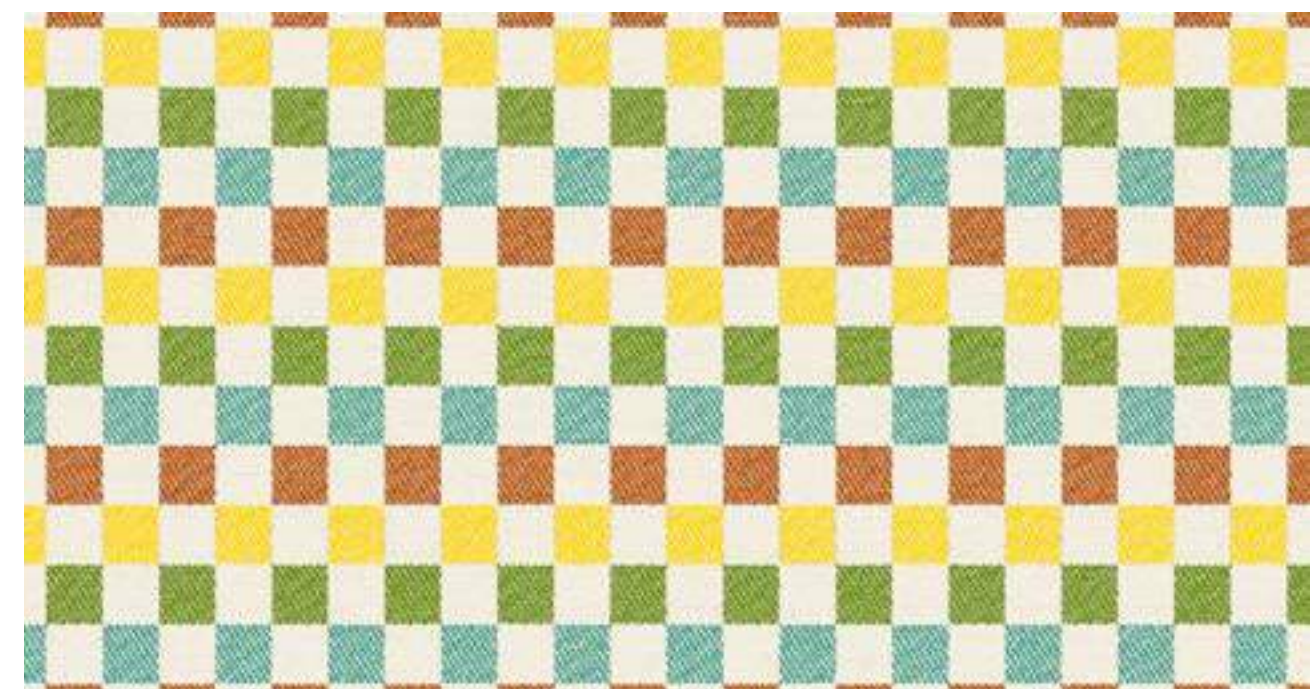
RAQUERO C / 48



RAQUERO C / 56



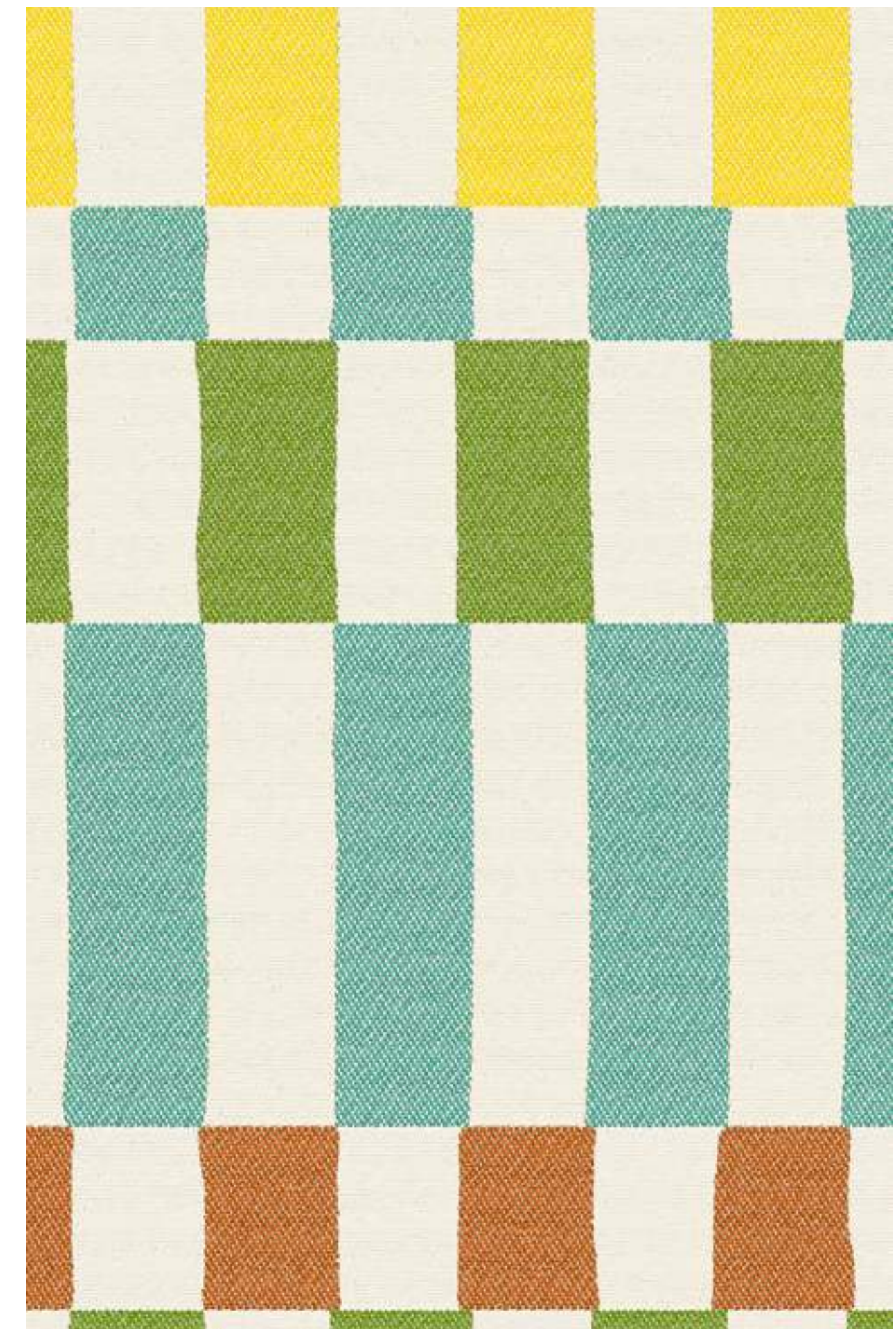
RAQUERO C / 84



FOQUE C / 52



HINOJO C / 84
HINOJO C / 56
HINOJO C / 54
HINOJO C / 48



OLAYA C / 52



GOLETA C / 56 



TEJO C / 56 HINOJO C / 56 TEJO C / 26 RAQUERO C / 56



NAVIO C / 56



VIMBA C / 56



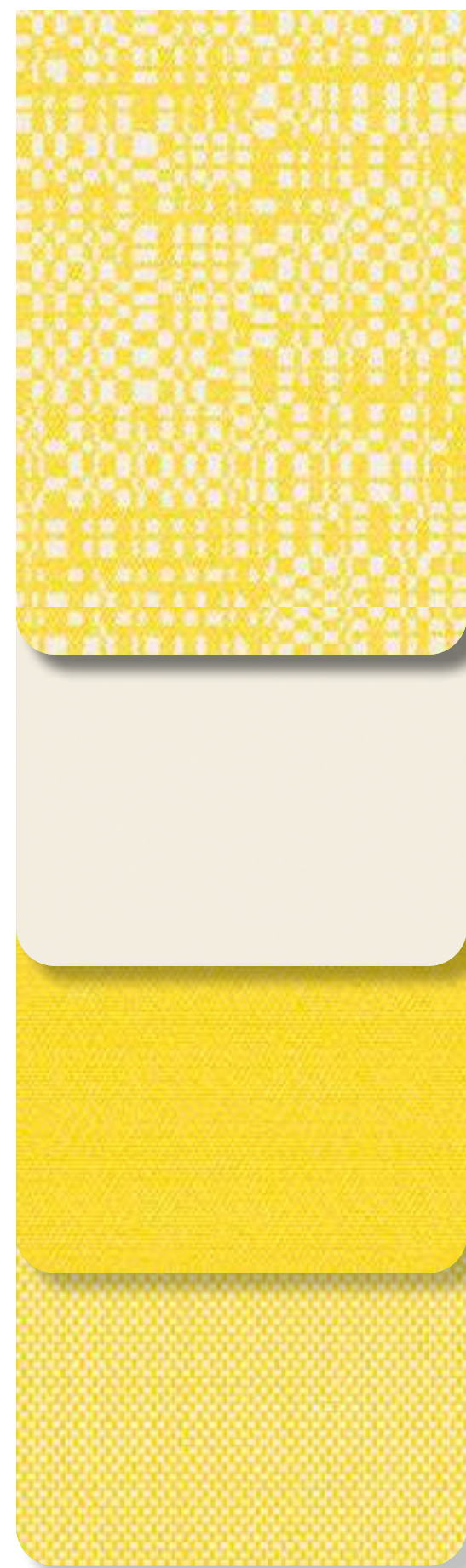
BEDOTIA C / 56



JUREL C / 56



GOLETA C / 84



TEJO C / 84 HINOJO C / 84 HINOJO C / 26 RAQUERO C / 84



PINAZA C / 84



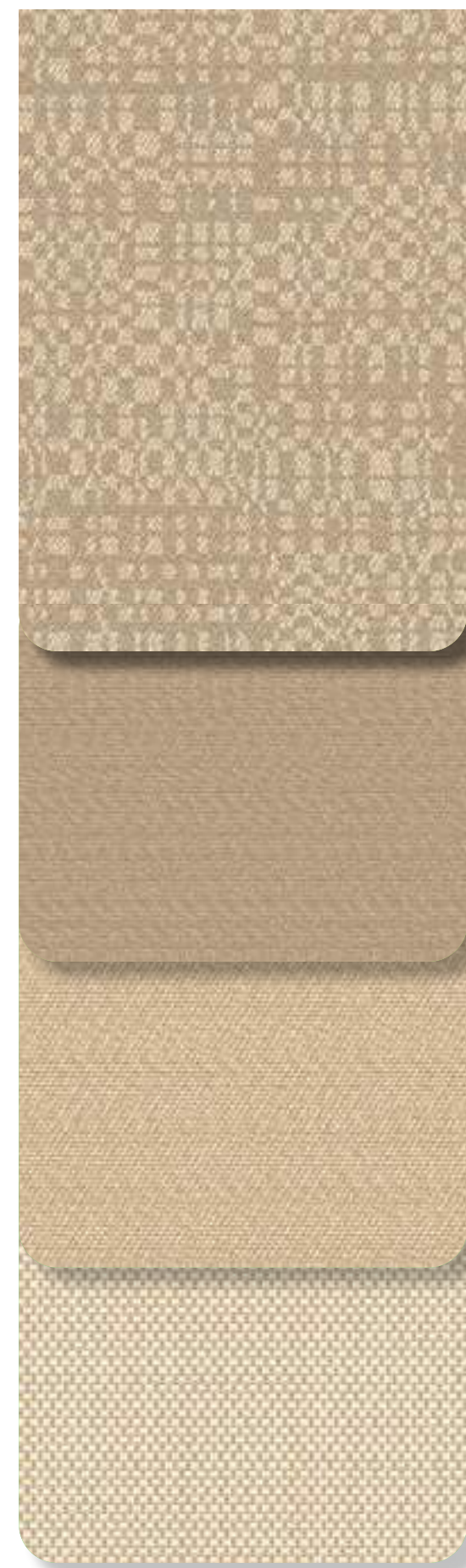
BALANDRO C / 84



BEDOTIA C / 84



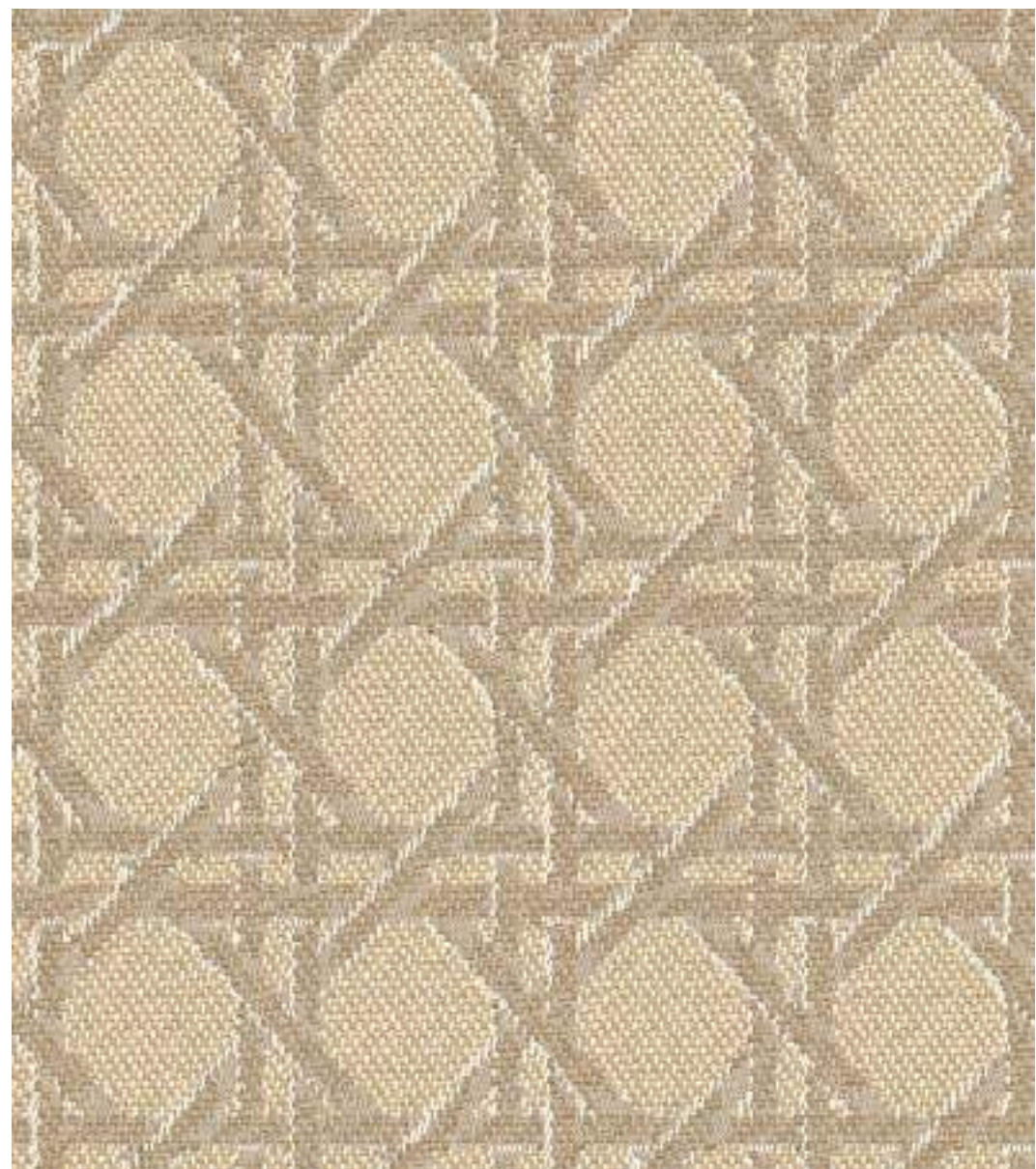
JUREL C / 84



TEJO C / 20 HINOJO C / 20 HINOJO C / 24 RAQUERO C / 20



GOLETA C / 20



BRIGO C / 20



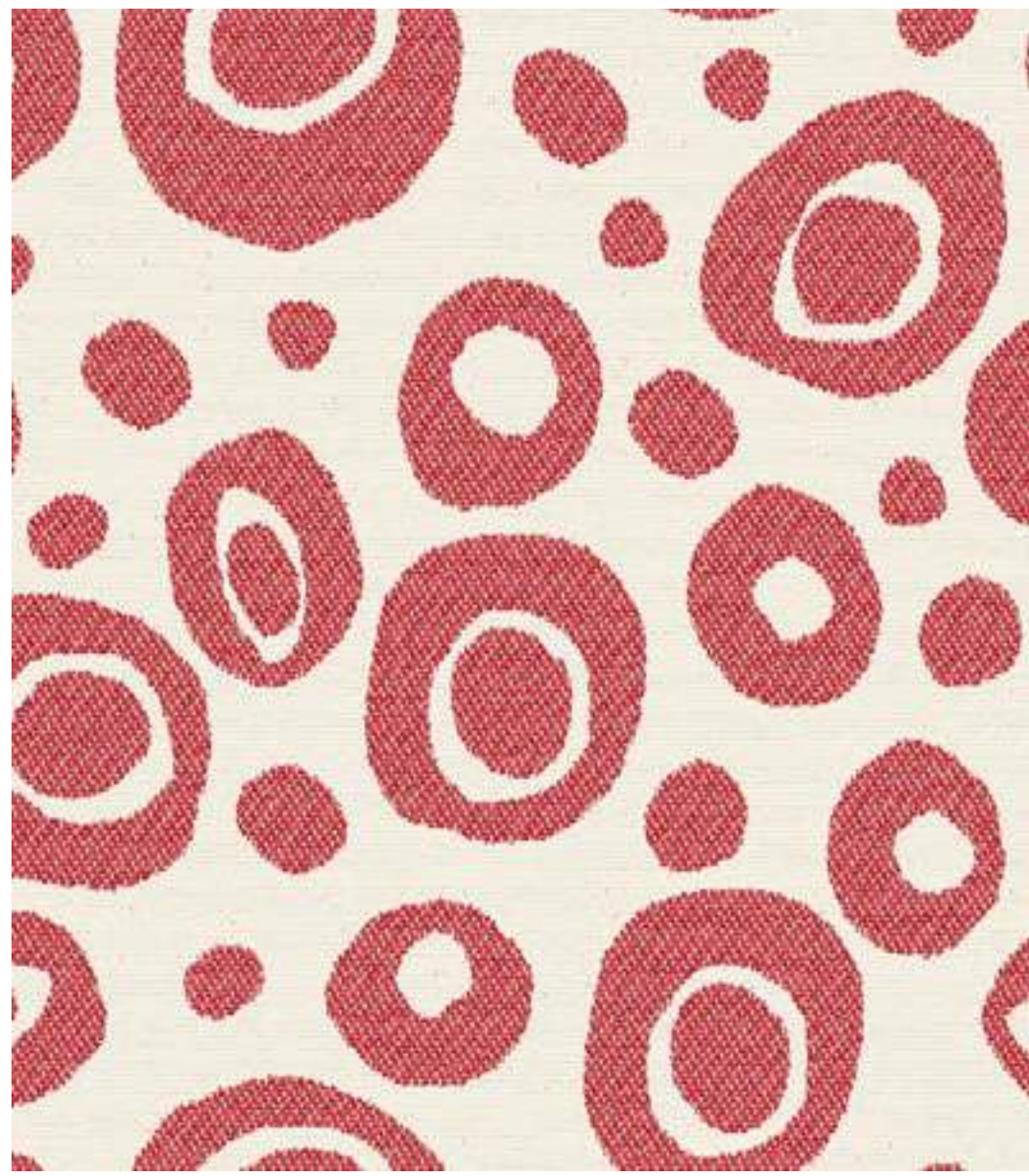
BEDOTIA C / 20



JUREL C / 20



SLOOP C / 20



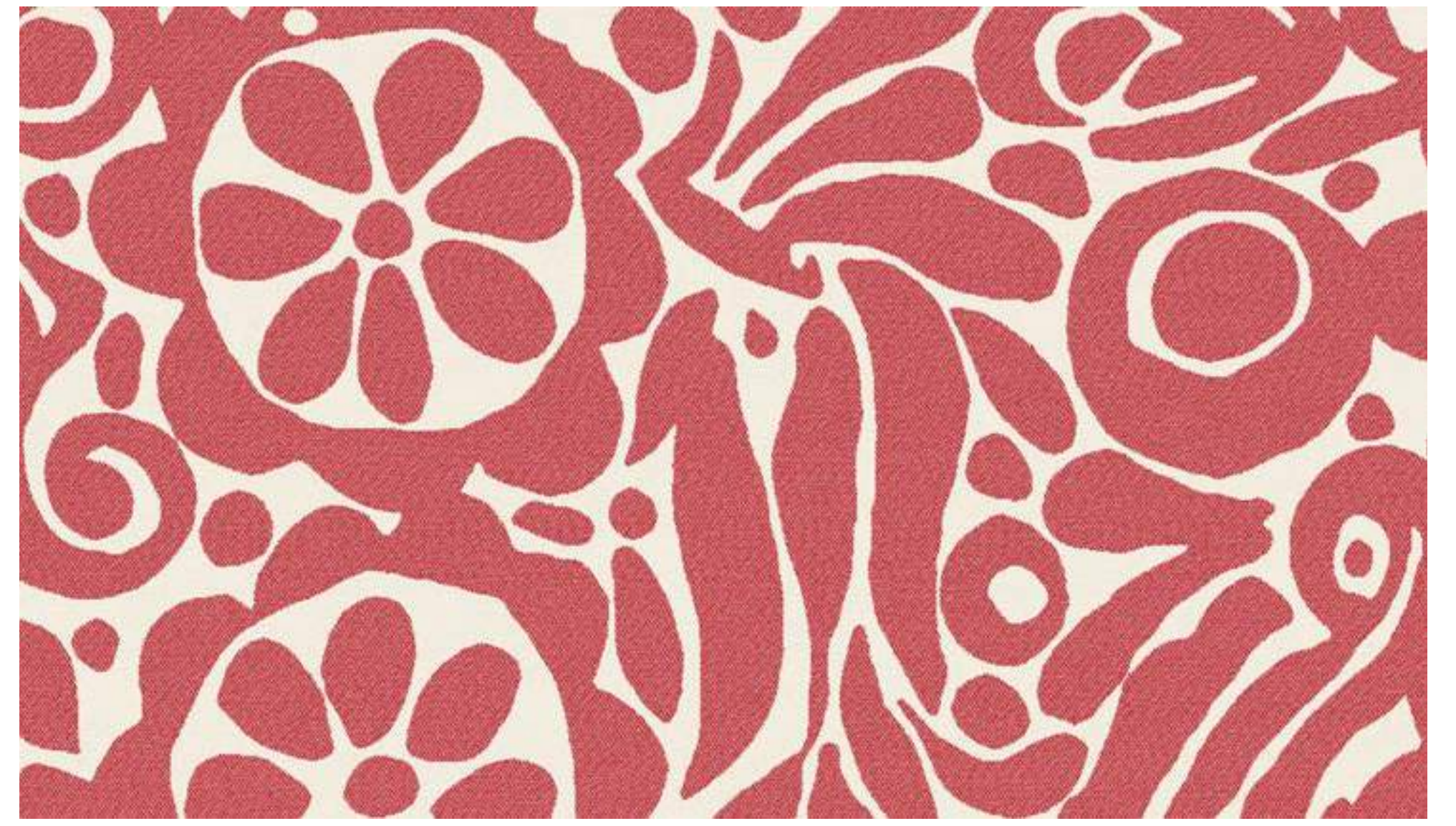
CARPIN C / 44



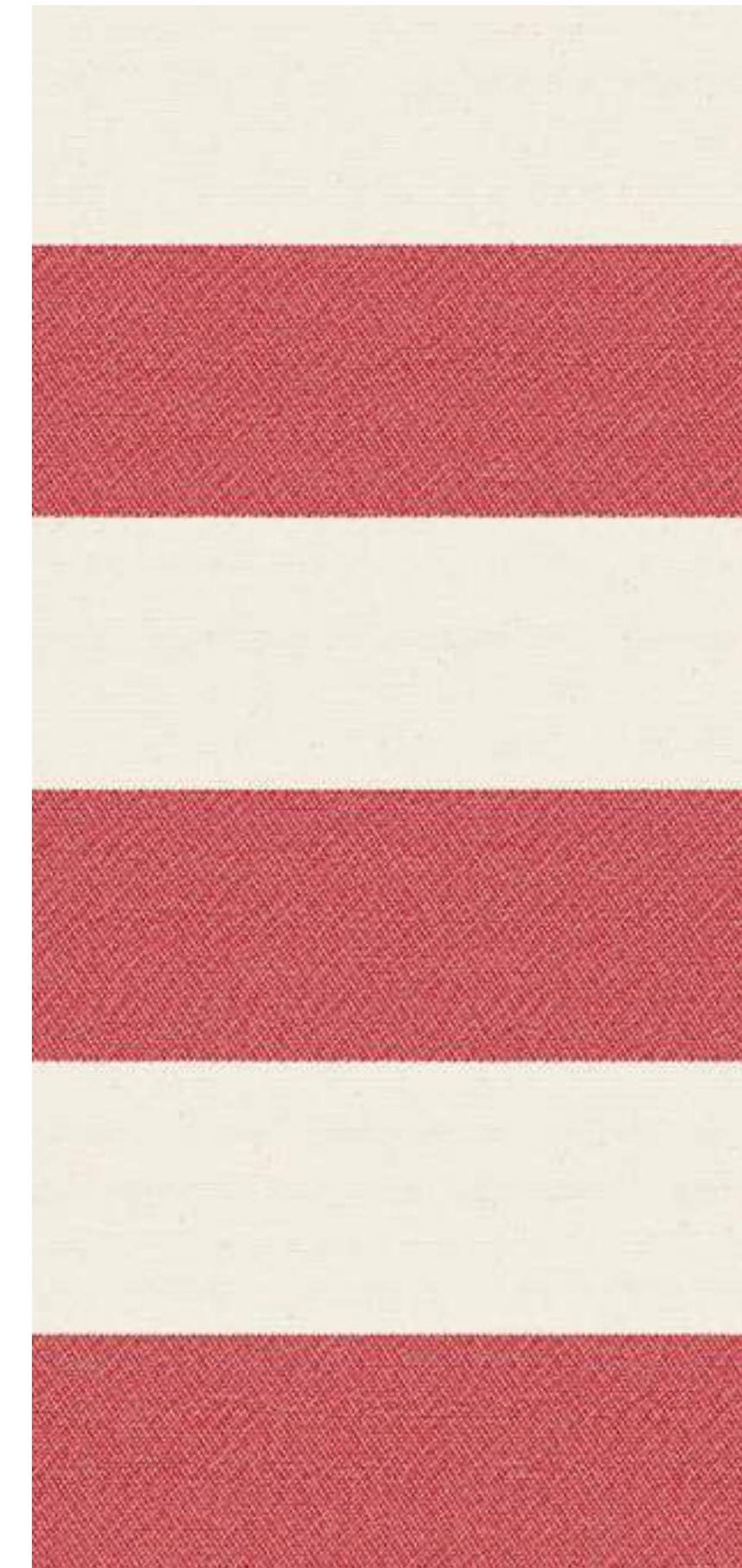
BEDOTIA C / 44



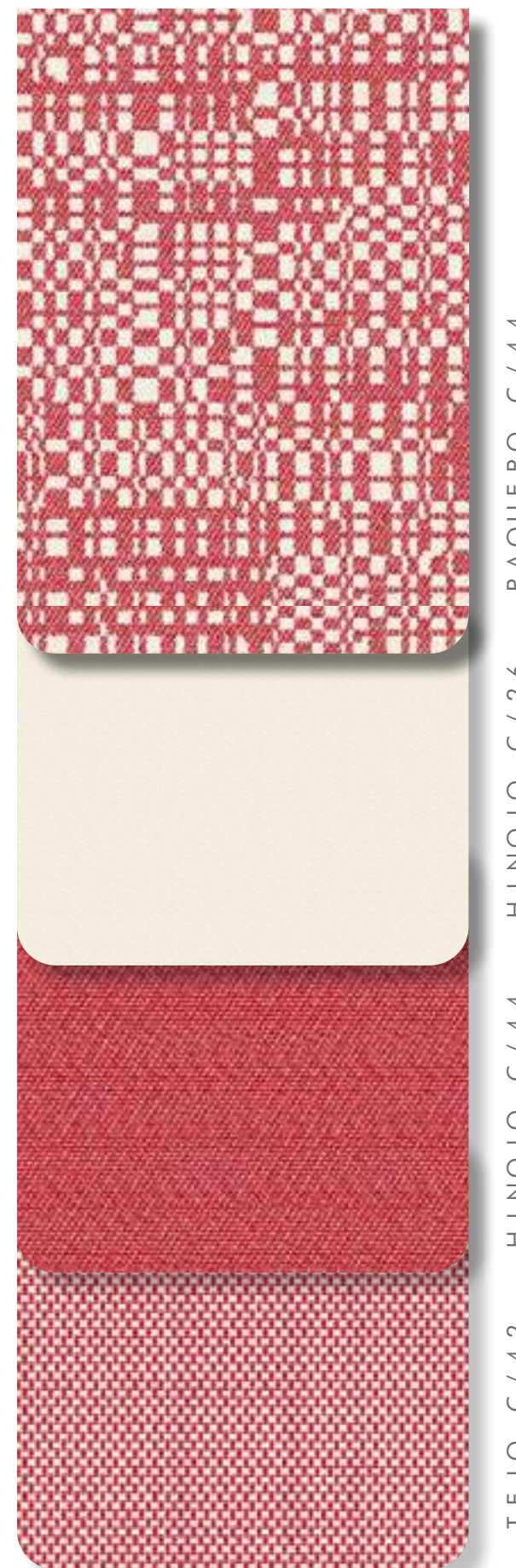
JUREL C / 44



PLATY C / 44



GOLETA C / 44



TEJO C / 42 HINOJO C / 44 HINOJO C / 26 RAQUERO C / 44

ISLAND

INDOOR & OUTDOOR



1. Retira el exceso de producto de la tapicería.
1. Remove excess product from upholstery.
1. Enlever le produit excédentaire du tissu.

2. Limpiar la mancha con un paño húmedo.
2. Clean stain with a damp cloth.
2. Nettoyez la tache avec un chiffon humide.

3. Dejar secar la tapicería al aire.
3. Allow the upholstery to become air-dry.
3. Laisser sécher le tissu dans l'air



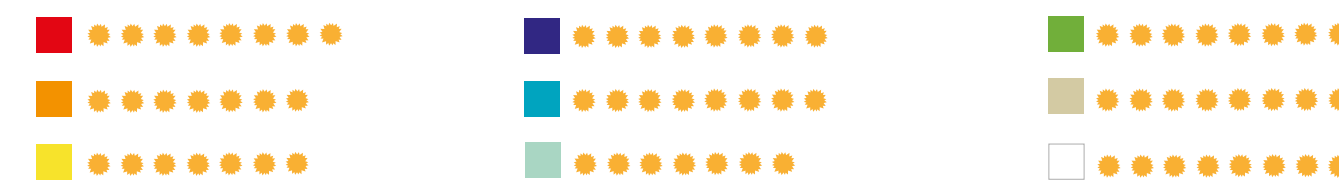
CARACTERÍSTICAS TÉCNICAS TECHNICAL CHARACTERISTICS CARACTÉRISTIQUES TECHNIQUES

NOMBRE NAME NOM	COMPOSICIÓN COMPOSITION COMPOSITION	ANCHO (cm) WIDTH (cm) LARGEUR (cm)	GRAMAJE (g/m²) WEIGHT (g/m²) GRAMMAGE (g/m²)	ABRASIÓN (ciclos) ABRASION TEST (cycles) TEST D'ABRASION (cycles)	PILLING PILLING PILLING	COSTURAS (u/t) SEAM STRENGTH (warp/weft) RESISTANCE DES COUTURES (c/t)
BRIGO, SLOOP	55%PP-45%PES	140	304	41.000	5	4,5/2,5
CEBRADA, KETA	55%PP-45%PES	140	308	45.000	5	4,8/3
CARPIN, PLATY	55%PP-45%PES	140	310	45.000	5	4,8/4,7
ESQUIFE, KOI	55%PP-45%PES	140	301	45.000	5	3/4,7
NAVIO, VIMBA	55%PP-45%PES	140	310	45.000	5	4,5/3
DRITTO, LUCIO	55%PP-45%PES	140	310	45.000	5	4,7/2,7
ESCAMAS, TILAPIA	55%PP-45%PES	140	316	45.000	5	4,8/3
BALANDRO, PINAZA	55%PP-45%PES	140	310	45.000	5	4,8/2,7
OLAYA, FOQUE	55%PP-45%PES	140	310	45.000	5	5/3,8
GOLETA	55%PP-45%PES	140	305	42.000	5	4,8/3,2
JUREL	55%PP-45%PES	140	310	45.000	5	4,8/3
RAQUERO	55%PP-45%PES	140	310	45.000	5	4,7/3,2
BEDOTIA	53%PP-47%PES	140	282	45.000	5	4,8/2,8
TEJO	31%PP-69%PES	140	246	45.000	5	5/6
HINOJO	55%PP-45%PES	140	310	43.000	5	5,1/5,2

INSTRUCCIONES DE LAVADO CLEANNING INSTRUCTIONS INSTRUCTIONS DE LAVAGE



SOLIDEZ A LA LUZ LIGHT FASTNESS SOLIDITÉ À LA LUMIÈRE



ABRASION TEST: UNE-EN ISO 12947-2 PILLING: UNE-EN ISO 12945-2 SEAM STRENGTH: UNE-EN ISO 13936-2 LIGHT FASTNESS: UNE-EN ISO 105-B04



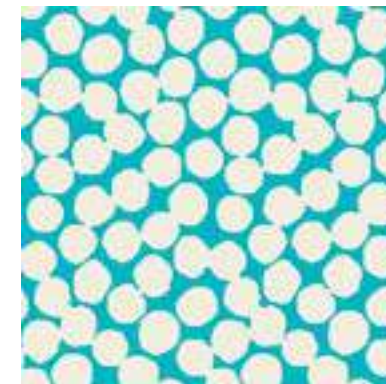
Lucio 70x70cm



Dritto 70x76cm



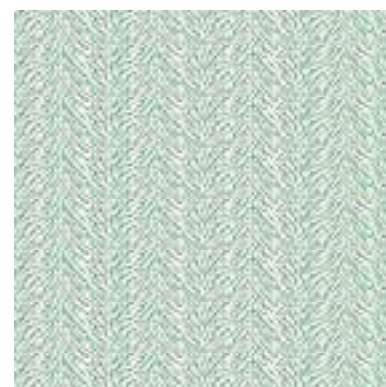
Escamas 35x76cm



Tilapia 35x93cm



Navio 70x108cm



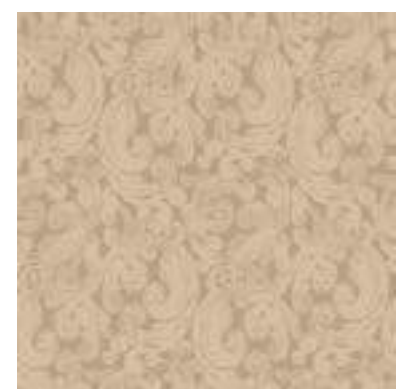
Vimba 17,5x9,5cm



Cebrada 35x36cm



Keta 17,5x59cm



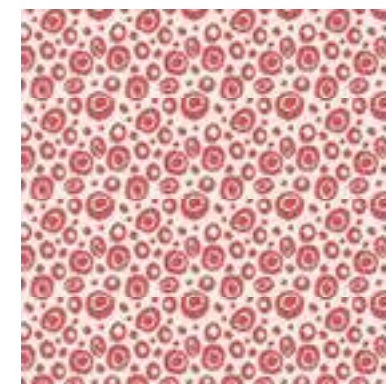
Sloop 35x72cm



Brigo 2,9x3,3cm



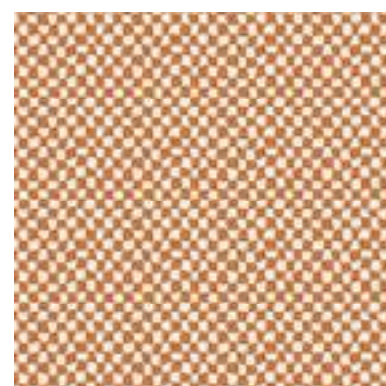
Platy 70x82cm



Carpin 17,5x18cm



Koi 17,5x19cm



Esquife 17,5x19cm



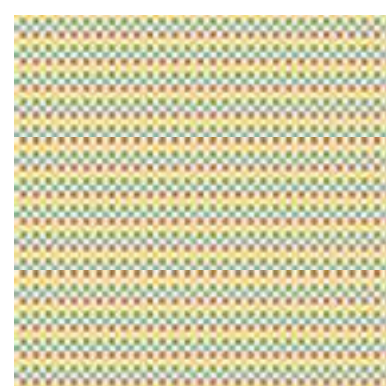
Pinaza 70x72cm



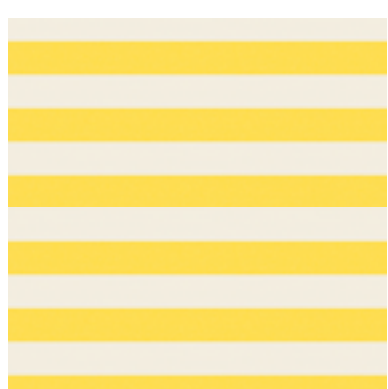
Balandro 17,5x12cm



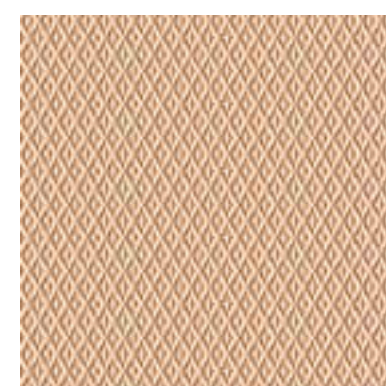
Olaya 70x70cm



Foque 2,3x5cm



Goleta 12,3cm



Jurel 3,5x6,2cm

